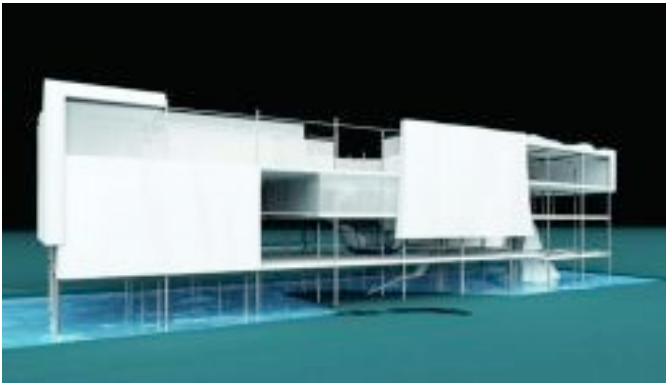


Polaris Climate Change Observatory - Brussels

- Introduction



Polaris Centre: Project by Atelier Brückner (Stuttgart)

© International Polar Foundation / Brückner

The International Polar Foundation (IPF) is currently engaged in building a series of Polaris Climate Change Observatories (CCO), with the first to be situated in Brussels. The Observatory's main objective is to make climate change comprehensible for the general public - while focusing on the importance of polar science in understanding its causes and consequences. The focal point and symbol of the Polaris will therefore be a 25 meters high representation of a cylindrical ice core, through the heart of which will run a transparent spiral staircase. Ice cores taken from the polar regions have, in the last two decades, enabled scientists to gain detailed information from the distant past about the Earth's climate and atmosphere. While descending the staircase, visitors will be able to witness nearly a million years of climate history as revealed by the bubbles of air which have been trapped in the ice for eons.

- The Polaris will present various aspects of the climate change phenomenon with the aid of polar science, including:
- The planet's climatic history - as the poles are the repositories of the World's climatic past).
- In particular, the growth in global greenhouse gas emissions since the industrial revolution and the resulting rise in average global temperatures.
- Explanation of the central scientific concepts underlying the complexity and fragility of Earth's climate (and the poles' central role in maintaining its stability).
- The impacts on ecosystems of climate change (noting that the polar regions are the most sensitive areas of the planet in relation to global warming) and required adaptation to those impacts.
- Possible actions to reduce greenhouse gas emissions to minimise climate change.

The International Polar Foundation sees the process of reflection imposed on society by climate change as a possible opportunity for establishing a long-lasting relationship with our planet. A genuinely sustainable relationship would put science and technology to work to achieve the kind of industrial and social

organisation which would allow us to continue to enjoy this planet for generations to come.

=====