

<http://www.express.co.uk/news/science/746566/Jesus-christ-crucifixion-christmas-2016-the-bible>

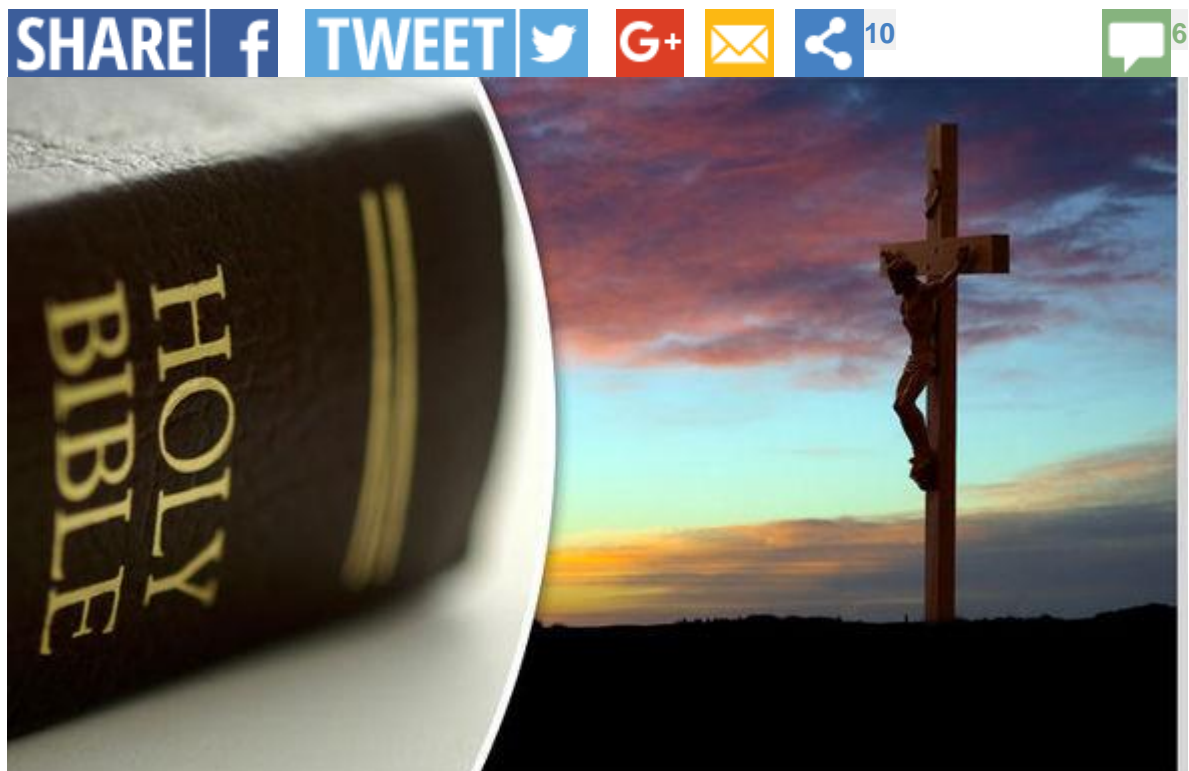
# SUNDAY EXPRESS

## New Testament proved true? Jesus' burial slab discovered? The Biblical findings of 2016

IN THE centuries following the death of Jesus Christ, scientists and historians have been trying to discover just how accurate the Bible was.

By [SEAN MARTIN](#)

PUBLISHED: 14:01, Sat, Dec 24, 2016



The Biblical findings of the year

There is no doubt in most scholars minds that the Bible is not entirely, well... gospel.

But a lot of what is contained in the Holy Book is true, or at least inspired by significant events or places.

Some great strides have been made this year in piecing together the accuracy of the Bible, and Express.co.uk examines the most significant Biblical archaeological findings of 2016.

## RELATED ARTICLES



[First written mention of Jesus: 2000-year-old lead tablets ARE genuine](#)



[Incredible discovery as 'Christ's tomb' opened after 500 years](#)



Jesus's burial slab was found this year

## **Jesus' burial slab**

Perhaps the most important finding in the history of Christianity was made in just the last few months when archaeologists excavating the alleged Tomb of Christ found the burial slab which Jesus was laid to rest on.

Restoration workers who were plying their trade on the Church of the Holy Sepulchre in Jerusalem stumbled upon the rock surface which Jesus was apparently rested upon.

The slab has not been seen since 1555 when it was enclosed in the Church of the Holy Sepulchre which contains the Tomb of Christ.

Christians claim following his crucifixion, Jesus was laid on the slab, or "burial bed" and enclosed in a tomb before being resurrected and ascending to Heaven several days later.

Centuries later, followers of Christ took the slab to what is now the Church of the Holy Sepulchre, where it has remained hidden for almost 500 years.

National Geographic's resident archaeologist, Fredrik Hiebert, said: "The marble covering of the tomb has been pulled back, and we were surprised by the amount of fill material beneath it.

"It will be a long scientific analysis, but we will finally be able to see the original rock surface on which, according to tradition, the body of Christ was laid."



The mystery of the Philistines solved?

## **Mystery of the Philistines solved?**

In the Bible, the Philistines are depicted as the enemies of the Israelites, with a young Israeli man named David defeating the Philistine warrior, the giant Goliath, in one of the most famous Biblical tales.

However, where the Philistines came from is shrouded in mystery, but in July, excavations carried out on an ancient cemetery cleared some of that up.

Archaeologists discovered the remains of 150 people in several chambers in the Israeli port city of Ashkelon.

Some of the bodies still contained traces of DNA, which will help scientists decipher the roots of the Philistines.

Buried alongside the people were small jugs which were thought to have contained perfumed oil, while some were buried with their prized possessions such as jewellery and weapons.

There was even evidence that some had been cremated which was an expensive practice at the time.

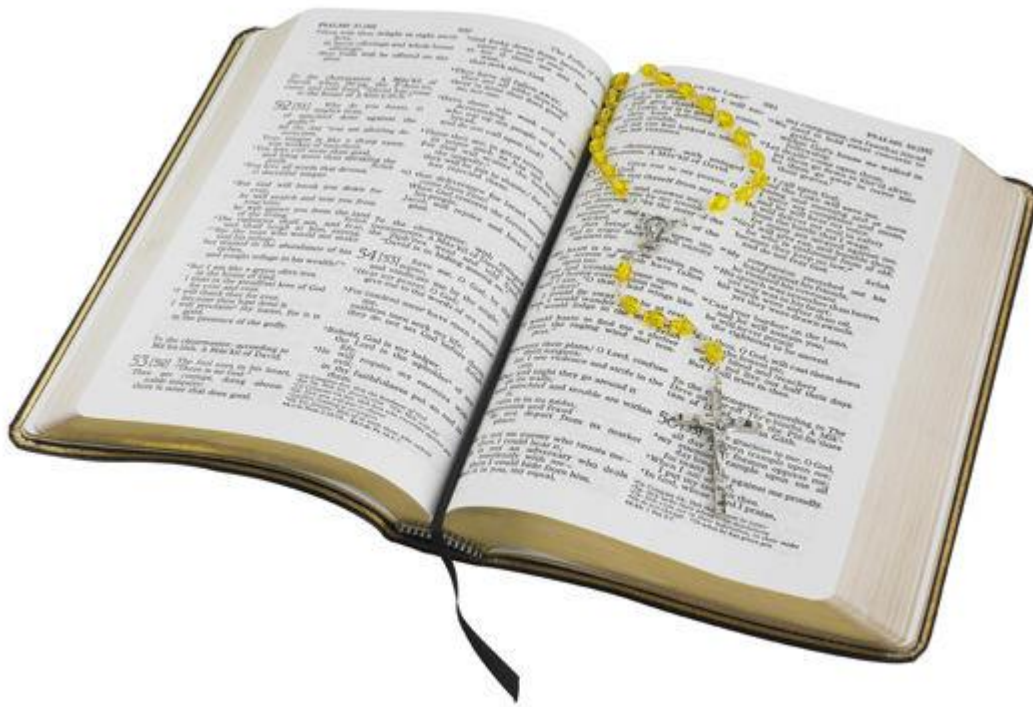
The team believe that this shows that the Philistines were more city-dwellers compared to the village lifestyle of the Israelites.

Archaeologist Lawrence Stager from Harvard University said: "The Philistines have had some bad press, and this will dispel a lot of myths."

The Philistine people are a 'sea people' but their origins have remained a mystery.

However, their red and black pottery indicates that that may have stemmed from the Mycenaean civilisation of the Aegean.

Mr Master said: "What is certain is that they were strangers in the Semitic region."



Has the New Testament been proved true?

### **The New Testament proved true?**

Back in August, discovered ruins of an ancient synagogue in Israel which seemingly confirm parts of the New Testament and accounts of Jesus Christ's life.

At a site called Tel Rechesh, near to Mount Tabor in the Nahal Tavor Nature Reserve in lower Galilee, in a synagogue that dates back to 79 AD, experts found evidence that Jesus once performed sermons at the place of worship.

Inscriptions found at the synagogue show that synagogues in the region were used for study of the Torah and meetings, rather than a place of worship, making it the perfect platform to Jesus to preach about his views on Judaism and how people should act.

Motti Aviam, a senior researcher at the Kinneret Institute for Galilean Archaeology at the Kinneret College on the Sea of Galilee, said: "This is the first synagogue discovered in the rural part of the Galilee and it confirms historical information we have about the New Testament, which says that Jesus preached at synagogues in Galilean villages."

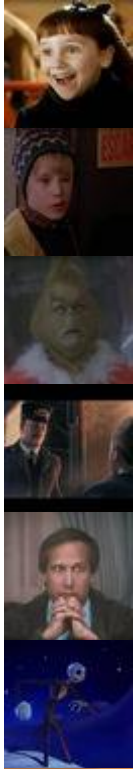
He added that the discovery will be "very important for Christians."

Tue, December 13, 2016



PLAY SLIDESHOW





Jesus crucifixion location may be wrong

**Bible proved wrong as scholar claims to have evidence that Jesus was crucified in different location**

Not exactly a finding, but an interesting theory nonetheless.

In October, an archaeologist claimed to have unearthed evidence that Jesus was not crucified on a hill in Calvary – just outside the walls of the City of Jerusalem – where the Romans had ordered him to carry his crucifix to.

Archaeologist Robert Cornuke, who has authored several books on the Bible, controversially claimed that this is wrong, and the Son of God was actually executed in the nearby Silwan Village – an area now occupied by Palestine.

Bonnie Brown, a philanthropist who helped Mr Cornuke with his research, said the sites previously believed to be the place of the crucifixion, the Church of the Holy Sepulcher along with Gordon's Calvary, contained too many “geographical flaws”.

Ms Browne told ASSIST News: “Cornuke ... proposes an altogether different place for the Crucifixion; namely the Palestinian occupied Silwan Village which is about 600 feet east of the City of David in Jerusalem.”

### **Related articles**

- [Mel Gibson making Passion of the Christ sequel about The Resurrection](#)
- [Tomb of Christ on brink of COLLAPSING as emergency repairers move in](#)
- [Story of Jesus Christ was a HOAX 'designed to control the people'](#)

[Religion](#)